

iPump 622

Streaming Media Decoder Installation Quick Start Guide



General Information

The Wegener **iPump 622 Enterprise Media Server** is an integrated satellite receiver and video server. It receives real-time broadcast-quality transmissions via a QPSK L-band input while it simultaneously receives IP data files from either a satellite or terrestrial IP connection. It supports streaming video and audio services via routing, recording, or direct playback. It can even convert traditional MPEG satellite channels into locally streamed services. Additional information may be found on the Wegener web site at: www.wegener.com.

Unpacking and Inspection

The box containing the unit should include:

- the **iPump 622 Enterprise Media Server**
- this Quick Start Guide
- an IR remote control
- a UL Safety Sheet
- an AC power cord
- bagged accessories

Carefully unpack the unit and the ac power cord and inspect for obvious signs of physical damage that might have occurred during shipment. Any damage claims must be reported to the carrier immediately. Be sure to check the package contents carefully for important documents and materials.

NOTE: Save the original packing materials and shipping containers in case the unit must be returned for repair. Packing the unit in another container in such a way that the unit is damaged will void the warranty.

Environmental Operating Conditions and Physical Specifications

The table below lists the **iPump 622** Environmental Limits and Physical Specifications

| ITEM/LIMIT | SPECIFICATION |
|--------------------------|---|
| Use | Indoor |
| Altitude | Up to 2000 meters |
| Temperature Range | 10° C to 35° C |
| Relative Humidity (max.) | 80% for temperatures up to 31° C decreasing linearly to 50% relative humidity at 35° C |
| Weight | ~20 pounds or 9.1 kilograms |
| Dimensions (H x W x D) | 4.49" x 15.35" x 14.45" or 114.0 mm x 390.0 mm x 367.0 mm |
| Input Power Rating | 100 to 127 V, or 200 to 240 V AC, 60/50 Hz, 5/3A, Power Supply (115/230V selectable switch) |

Desktop Installation and Circuit Protection Requirements

To set up the **iPump 622** in a desktop environment, place the unit on a flat surface where it will not be subject to spills or impacts. Route cables to the unit so that they will not be hit or pulled, causing damage to the connectors or to the unit itself. Ensure that there is a sufficient flow of cool air around the unit so that its operating ambient temperature range is not exceeded.

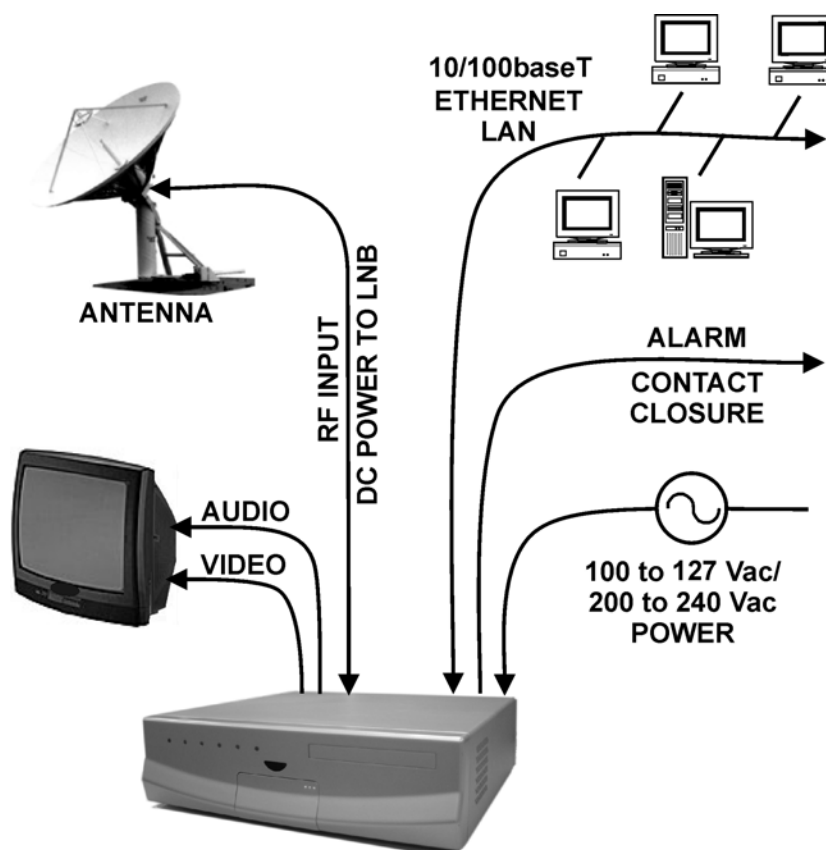
When connecting the **iPump 622** unit to the power supply, review the ratings of all equipment in the circuit to ensure that the branch circuit, as well as the power source, will not be overloaded. Also make sure that a protected power strip is used to attach it to the power supply.

WARNING: FCC-Mandated Suppression of Radio Frequency Emissions

This is a **Class A** product. In a domestic environment this product may cause radio interference for which the user may need to take mitigating action. If the Ethernet port has a cable connected to it, that cable must be properly shielded and grounded to minimize RF emissions that could interfere with nearby equipment.

System Setup

This figure illustrates the basic system setup for an **iPump 622**:



Front and Rear Panel Views

The front and rear panels of the iPump 622 are shown in Figures 1 and 2.

Figure 1: iPump 622 Enterprise Media Server Front Panel

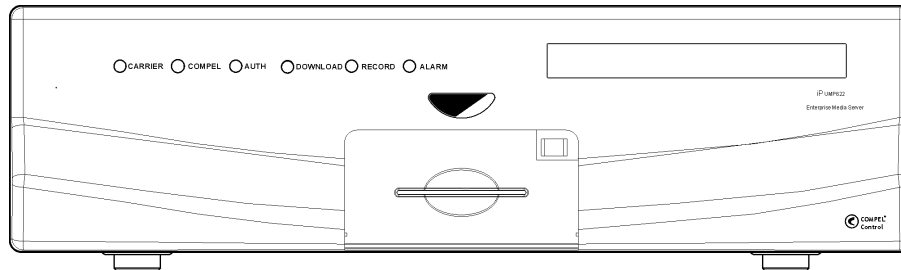
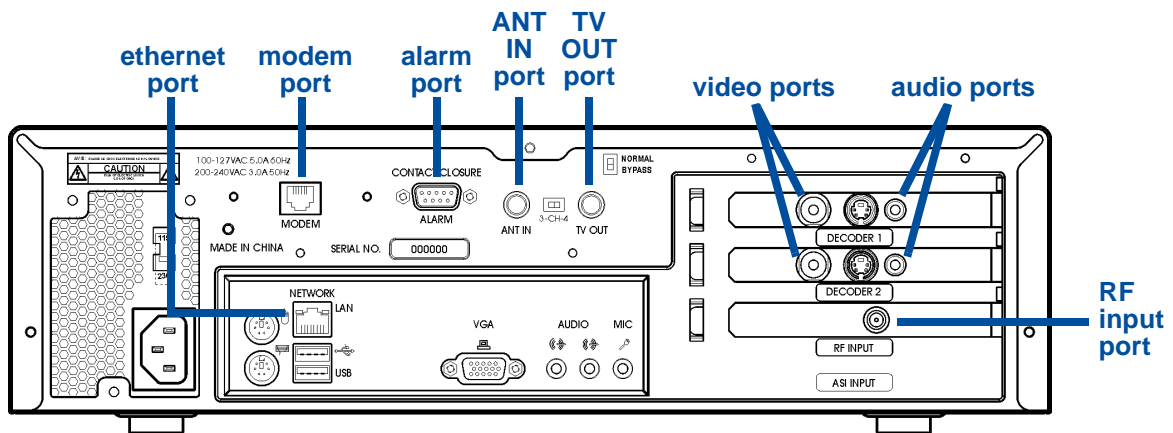


Figure 2: iPump 622 Rear Panel and Connectors



Rear Panel Connections

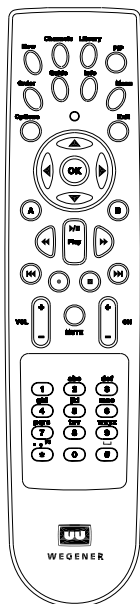
For **iPump 622** setup, properly connect the rear panel ports with the cables as detailed below. See the iPump Reference Manual for complete connector and signal details.

- Connect the L-band output from your antenna's LNB to the iPump's **RF input port** [950 to 2150 MHz; female Type F connector with extender cable attached or BNC connector if your unit has the optional ASI input.]
- Connect a suitable monitor to the iPump's **audio port**. [An optional, auxiliary audio port is also available. A 1/8-inch stereo output jack is the connector for each audio port, but a 1/8-to-RCA adapter is included in the accessories bag.]
- Connect a suitable video monitor to either the iPump's **video port** or the **TV OUT port**. [Video port is a female, 4 pin mini DIN (S-video) connector. An SVD-to-RCA adapter is included in the accessories bag.] The Normal/Bypass switch must be in the Normal position disabling the TV OUT port. To use the **TV OUT port**, the switch must be in the Bypass position, disabling the Decoder 1 Video Port. [Use the Channel 3/4 RF Modulator switch to select the appropriate output.]

NOTE: If your **iPump 622** is equipped with two decoders, then repeat the connections for the audio & video ports.

- Connect your LAN line to the iPump's **Ethernet port** [10/100baseT; female RJ-45 connector.]
- The **Alarm port** on the rear panel may be used to provide a contact closure during alarm conditions or on command from Compel.

IR Remote Control



To perform many of the **iPump 622** functions, including setup, you'll need to use the IR remote control included with your bagged accessories.

| Key | Function |
|---------------|--|
| Arrow keys | Navigate through the menus and selects items |
| OK key | Enter or select |
| Number keys | Accepts numbers |
| Order button | Goes to live TV and the new, channels, guide info, and menu keys all bring up the overlay screen |
| Library key | Brings up the IP settings menu when the admin screen is active |
| FF (>>) | Fast Forward |
| RW (<<) | Rewind |
| Play | Play |
| Stop | Stop |
| PIP key | Brings up the menu with Picture-in-Picture |

On-Screen IP Setup Procedure

With the **iPump 622** connected to a video monitor, you can setup, view, or change the **iPump 622's** IP settings using the remote control.

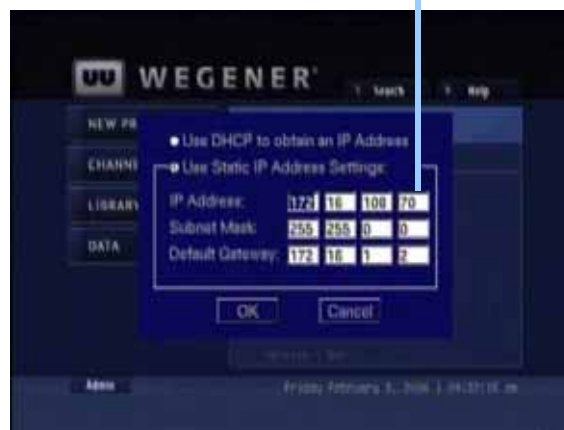
- 1) Ensure that your video monitor is connected to the **iPump** video port labeled Decoder 1.
- 2) To access the on-screen IP setup screen, select the **Admin** button on the main OSD (On-Screen Display) menu and press the **Library** key on the remote.
- 3) When the IP Setup screen displays, use the arrow keys to navigate to each of the input or selection fields.
- 4) Use the **OK** key to select the option button for either **DHCP** (automatic) or **Static** (manually input) IP address.

NOTE: If **Static** is selected, then use the number keys to enter the IP numeric entries.

In some cases, it may be necessary to set specific values for the IP and Subnet addresses. Consult your network administrator.

When entering the IP address in the OSD, do not include the leading zeros. For example, IP address **128.092.050.004** (as supplied by the network administrator) must be entered as **128.92.50.4** in the OSD.

Static IP address with no leading zeros



- 5) To accept the setup, navigate to the **OK** button and then press the **OK** key. To cancel the setup, navigate to the **CANCEL** button and then press the **OK** key. This completes the IP setup for the **iPump 622**.

Web Browser Access

When entering the IP address in the web browser, do not include the leading zeros. For example, IP address **128.092.050.004** (as supplied by the network administrator) must be entered as **128.92.50.4** in the web browser.

- 1) Ensure that your LAN line is connected to the **iPump** Ethernet port.
- 2) From the computer connected to the **iPump 622**, open a current-version internet browser.
- 3) In the browser's address field, enter the IP address noted from the OSD menu. The **Status** tab of the **iPump 622** web browser appears.

Figure 3: iPump 622 web browser Status tab

IP address with no leading zeros



Warranty

The following warranty applies to all **Wegener Communications** products:

All Wegener Communications products are warranted against defective materials and workmanship for a period of one year after shipment to customer. Wegener Communications' obligation under this warranty is limited to repairing or, at Wegener Communications' option, replacing parts, subassemblies, or entire assemblies. Wegener Communications shall not be liable for any special, indirect, or consequential damages. This warranty does not cover parts or equipment that have been subject to misuse, negligence, or accident by the customer during use. All shipping costs for warranty repairs shall be prepaid by the customer. There are no other warranties, express or implied, except as stated herein.

Technical Support

In the event that the unit fails to perform as described, contact Wegener Communications Customer Service at:

- Phone: (770) 814-4057
- Fax: (678) 624-0294
- E-mail: service@wegener.com

Corporate Office:

WEGENER

11350 Technology Circle
 John's Creek
 Duluth, GA 30097

Service Department:

WEGENER

Customer Service
 359 Curie Drive
 Alpharetta, GA 30005

