

SMD 515

Streaming Media Decoder Installation Quick Start Guide



WEGENER®



General Information

The **WEGENER SMD 515** accelerates access to High Definition (HD) theater-quality video. The **SMD 515** supports MPEG-4 AVC (also known as ITU-T H.264) HD decoding. AVC HD can deliver brilliant wide screen pictures with as little as 6Mbps of data. Additional information may be found on the **WEGENER** web site at www.wegener.com.

This product incorporates copyright protection technology that is protected by U.S. patents and other intellectual property rights. Use of this copyright protection technology must be authorized by Macrovision, and is intended for home and other limited viewing uses only unless otherwise authorized by Macrovision. Reverse engineering or disassembly is prohibited.

Unpacking and Inspection

The box containing the unit should include:

- The **SMD 515** Unit
- This Quick Start Guide
- Component Video Cable
- Composite Video/Stereo Audio Cable
- A UL Safety Sheet
- An AC Power cord
- Power Supply Module
- IR remote control (optional)

Carefully unpack the unit and the ac power cord and inspect for obvious signs of physical damage that might have occurred during shipment. Any damage claims must be reported to the carrier immediately. Be sure to check the package contents carefully for important documents and materials.

NOTE: Save the original packing materials and shipping containers in case the unit must be returned for repair. Packing the unit in another container in such a way that the unit is damaged will void the warranty.

Environmental Operating Conditions and Physical Specifications

The table below lists the **SMD 515** environmental limits and physical specifications

Item/Limit	Specification
Use	Indoor
Altitude	Up to 2000 meters
Temperature Range	10° C to 45° C
Relative Humidity (max.)	80% for temperatures up to 31° C decreasing linearly to 45° C
Weight	5 pounds or 2.25 kilograms with PVR option installed
Dimensions (H x W x D)	2.1" x 10.6" x 9.0" or 53.3 mm x 269.2 mm x 228.6 mm
Input Power Rating	12VDC 2.3A

Location and Mounting

The **SMD 515** unit is set up for desktop operation. Maintain a clean, dry environment for the unit.

Desktop Installation

To set up the **SMD 515** unit in a desktop environment, place the unit on a flat surface sturdy enough to support the unit's weight. Place it where it will not be subject to spills or impacts. Route cables to the unit so that they will not be hit or pulled, causing damage to the connectors or to the unit itself. Make sure that there is a sufficient flow of cool air so that the unit's operating ambient temperature range is not exceeded.

NOTE: If degraded picture quality is observed while viewing copy-protected VOD movies, connect the set-top box directly to the TV set. Do not connect through a VCR.

Circuit Protection and Grounding

When connecting the **SMD 515** unit to the power supply, review the ratings of all equipment in the circuit to ensure that the branch circuit, as well as the power source, will not be overloaded. Also make sure that a protected power strip is used to attach the unit to the power supply.

WARNING: FCC-Mandated Suppression of Radio Frequency Emissions

This is a **Class A** product. In a domestic environment this product may cause radio interference for which the user may need to take mitigating action. If the Ethernet port has a cable connected to it, that cable must be properly shielded and grounded to minimize RF emissions that could interfere with nearby equipment.

Front and Rear Panel Views

Front Panel and Functions

The front panel of the **SMD 515** is shown in **Figure 1**.

Figure 1: SMD 515 front panel

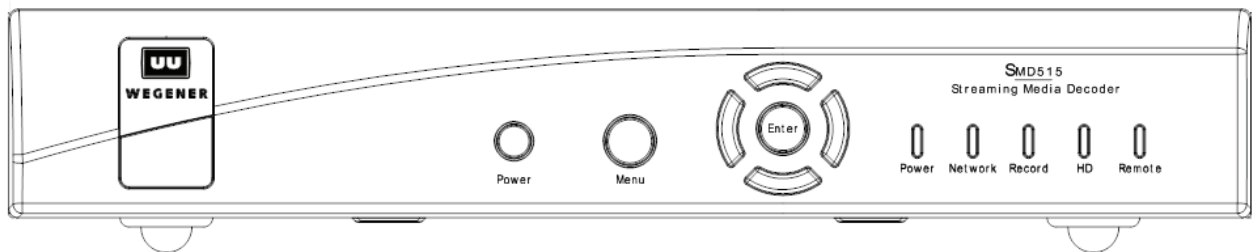


Table 1 shows the LED indicators and state.

Table 1: SMD 515 LED indicators and state

LED Indicator	Color and State	Description
Power	Green - constant	Decode mode (ON)
	none	Standby mode (OFF)
Network	Green - flashing	Ethernet connection is up
	Green - constant	Decoding a multicast stream
Record	Red - constant	Recording if equipped with PVR (Personal Video Recorder)

LED Indicator	Color and State	Description
HD	Green - constant	Playing a High Definition stream
Remote	Green - flashing	Processing remote control commands

Table 2 shows the front panel buttons and functions.

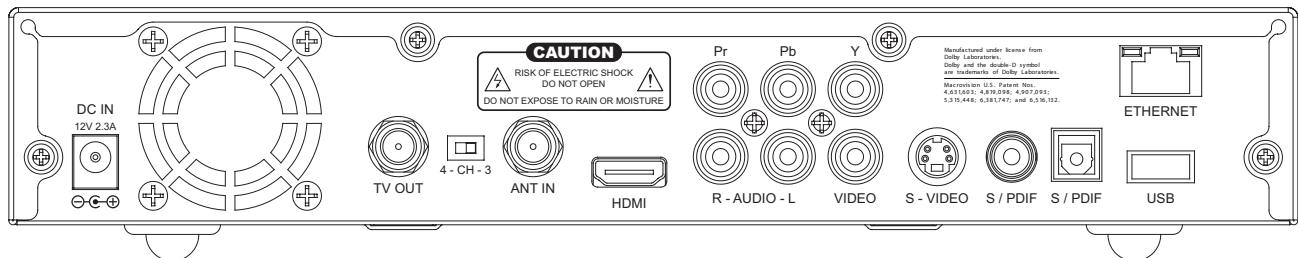
Table 2: SMD 515 front panel buttons and functions

Button	Function
Power	Toggles between Decode (ON) and Standby (OFF) modes
Menu	Launches system setup screen
Left	Navigates the setup screen or selects the previous available audio program in the current multicast stream
Right	Navigates the setup screen or selects the next available audio program in the current multicast stream
Up	Selects the next higher number multicast channel
Down	Selects the next lower number multicast channel
Enter (Select/OK)	Makes a selection in the setup screen

Rear Panel and Connectors

Figure 2 shows the rear panel of the SMD 515.

Figure 2: SMD 515 Rear Panel and Connectors



Connector/Pin-out Information

Table 3 lists connector types, pin numbers, and signal descriptions for each of the SMD 515 rear panel connectors.

Table 3: SMD 515 rear panel connector and switch descriptions

Name	Type	Signal Name	Signal Description
DC IN	Male Power Jack	Power	+12 VDC @ 2.3A
TV Out	Type F	Channel 3 or 4 Output to TV	Modulated NTSC
4 - CH - 3	Switch	Select Channel 3 or 4 Output to TV	Modulated NTSC
ANT IN	Type F	Input from TV Antenna	Modulated NTSC
Pr	RCA Phono	Component Pr	Component SD/HD Video
Pb	RCA Phono	Component Pb	Component SD/HD Video
Y	RCA Phono	Component Y	Component SD/HD Video

Name	Type	Signal Name	Signal Description
R - Audio	RCA Phono	Right Audio	Audio Audio Formats supported: <ul style="list-style-type: none"> ■ 16 bit PCM ■ MPEG1 Layer II ■ MPEG4 LC ■ Dolby Digital * ■ AAC
L - Audio	RCA Phono	Left Audio	
Video	RCA Phono	Composite Video	Composite SD Video
S-VIDEO	Mini DIN	Y/C separated video	Separated SD Video
S/PDIF	RCA Phone	S/PDIF Coax	Digital Audio
S/PDIF	Fiber	S/PDIF Optical TosLink	Digital Audio
Ethernet	RJ-45	Ethernet	10/100 BaseT
USB	USB	USB	USB
HDMI	Type A receptacle	High Definition Multimedia Interface	Digital Video and Digital Audio

NOTE: * Dolby and the double-D symbol are trademarks of Dolby Laboratories. Manufactured under license from Dolby Laboratories.

Operation

When the **SMD 515** is connected to a video monitor, you can use the **Setup Screens** with the optional IR remote control to setup the:

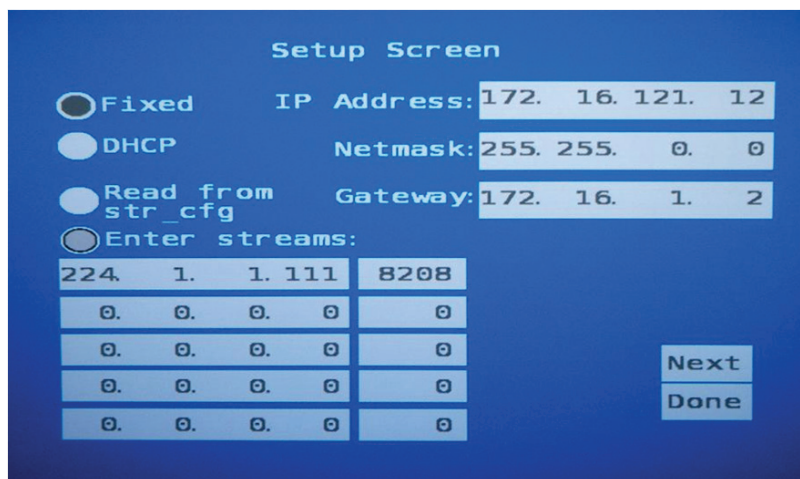
- IP address
- Audio/Visual options
- Closed Captioning and player application

Use the optional IR remote control or the front panel's **Enter** and arrow buttons to navigate and select options for these **Setup Screens**.

IP Address Setup

- 1) From the front panel or the optional IR remote control, press **Menu** to begin the setup. The **Setup Screen** shown in **Figure 3** displays on the video monitor.

Figure 3: SMD 515 Setup Screen



- 2) Navigate this setup screen to select:
 - a fixed static IP address or a temporary DHCP (Dynamic Host Configuration Protocol) address from your network.

- the network's Netmask and Gateway address (requires optional IR remote).
- up to five multicast IP addresses / ports.

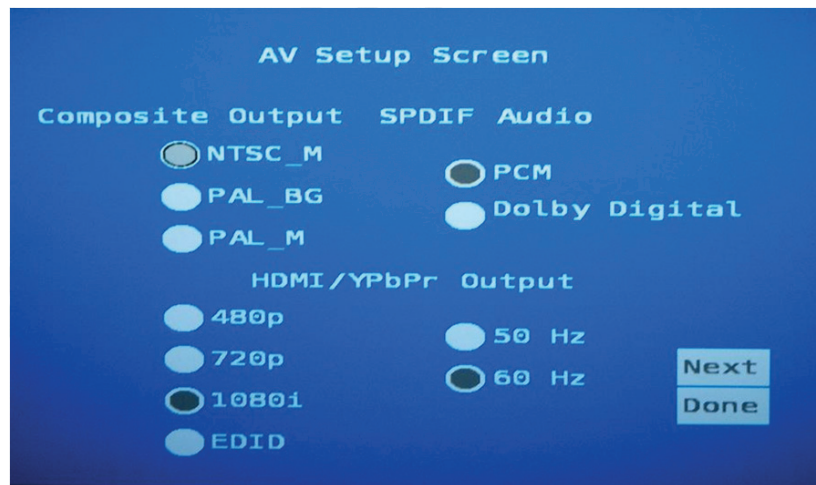
3) Select **Next** to continue to the **AV Setup Screen** or **Done** to complete the setup.

NOTE: Contact your system administrator regarding the preferred IP address setup and for any addresses necessary to complete this setup.

AV (Audio/Visual) Setup

1) From the initial **Setup** screen, select **Next** to navigate to the **AV Setup Screen**. The **AV Setup Screen** shown in **Figure 4** displays on the video monitor.

Figure 4: SMD 515 AV Setup Screen



2) Navigate this setup screen to set the:

- Composite output format.
- S/PDIF digital audio output format.
- format/resolution and vertical refresh rate of the HDMI and Component (YPbPr) outputs.

NOTE: Selecting **EDID** causes the **SMD 515** to use the preferred format in the **EDID** data from the TV.

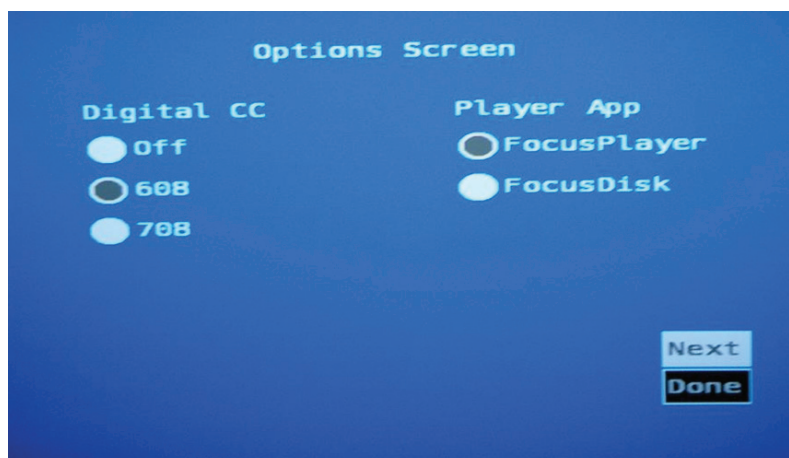
3) Select **Next** to continue to the **Options Setup Screen** or **Done** to complete the setup.

Options Setup

The **Options Screen** allows you to set Closed Captioning and select a player application.

1) From the **AV Setup Screen** screen, select **Next** to navigate to the **Options Screen**. The **Options Screen** shown in **Figure 5** displays on the video monitor.

Figure 5: SMD 515 Options Screen



2) Navigate this setup screen to:

- Enable or disable digital closed captioning. If selected, the EIA 608 or EIA 708 closed captions display as an overlay on the video.
- Select a player application. The FocusDisk application tests the PVR functions and should not be used for prolonged periods of time.

3) Select **Done** to complete the setup.

NOTE: This utility may be replaced by a user interface supplied by your system operator. Please contact your system operator for operation instructions.

Warranty

The following warranty applies to all **Wegener Communications** products:

All Wegener Communications products are warranted against defective materials and workmanship for a period of one year after shipment to customer. Wegener Communications' obligation under this warranty is limited to repairing or, at Wegener Communications' option, replacing parts, subassemblies, or entire assemblies. Wegener Communications shall not be liable for any special, indirect, or consequential damages. This warranty does not cover parts or equipment that have been subject to misuse, negligence, or accident by the customer during use. All shipping costs for warranty repairs shall be prepaid by the customer. There are no other warranties, express or implied, except as stated herein.

Technical Support

In the event that the unit fails to perform as described, contact **Wegener Communications** Customer Service at:

- Phone: (770) 814-4057
- Fax: (678) 624-0294
- E-mail: service@wegener.com

Corporate Office:

WEGENER

11350 Technology Circle

John's Creek

Duluth, GA 30097

Service Department:

WEGENER

Customer Service

359 Curie Drive

Alpharetta, GA 30005

