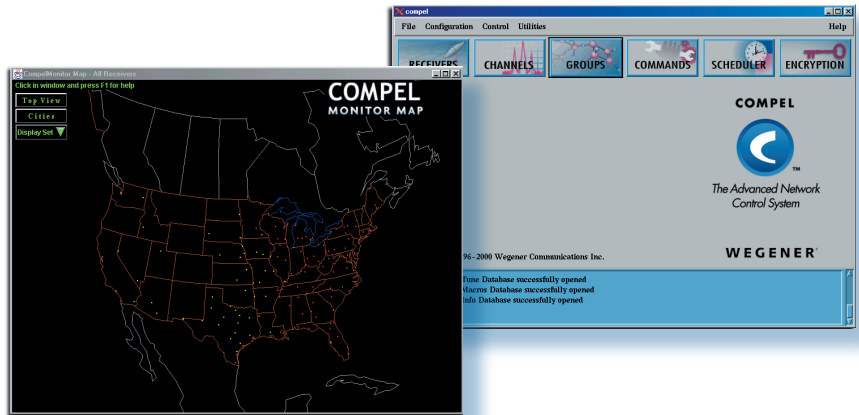


# COMPEL

## CONDITIONAL ACCESS



## COMPEL FEATURES

**RSA Audited**

**Continual Key Change**

**Secure Micro in Receiver**

**Uses COMPEL Database**

**Export Ready**

**Fast Key Generation**

### COMPEL CONDITIONAL ACCESS

COMPEL CA, an optional software module for WEGENER's COMPEL Network Control System, is uniquely designed to meet the security needs of broadcasters and private networks.

### FAST KEY GENERATION

COMPEL CA is fast. Existing conditional access systems have consistently frustrated network operators because the site permissioning function can take hours to complete. With over 100 keys transmitted every second, COMPEL CA is able to update a 5,000 site network in less than a minute.

### EASY NETWORK DEPLOYMENT

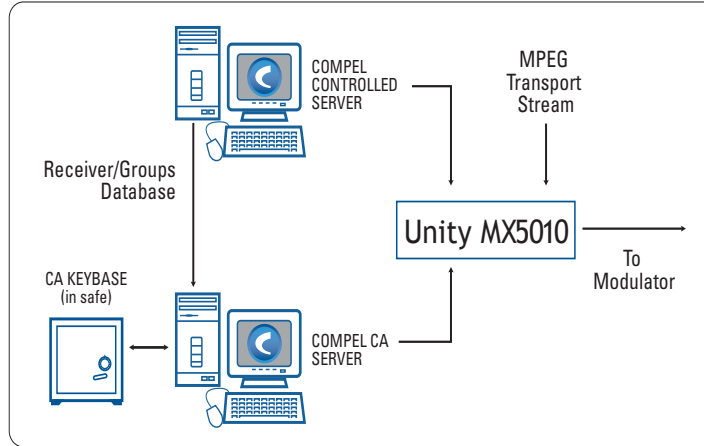
COMPEL CA is self-contained. No constant card distribution is necessary. The software utilizes a secure micro that is found in every WEGENER Unity receiver. Based on solid cryptography using one-way functions, COMPEL CA delivers secure conditional access to your network without the high cost and hassle of deploying smart cards.



**WEGENER®**

OPTIMIZING MEDIA DISTRIBUTION

# COMPEL - CONDITIONAL ACCESS



## INDEPENDENTLY EVALUATED

RSA Data Security has audited COMPEL CA. RSA is an independent lab with a 15-year history in security and encryption systems.

## WEGENER'S COMPEL NETWORK CONTROL SYSTEM

WEGENER's COMPEL Network Control System is a powerful, user-configurable system designed to remotely control a wide variety of WEGENER satellite receivers. Receivers may be controlled individually, by groups or through complex address structures.

Use COMPEL's graphical user interface (GUI) to build a database of your network and control all aspects of receiver operation.

COMPEL provides network control solutions for addressable audio, video and data products.

[www.wegener.com/PRODUCTS/index.php](http://www.wegener.com/PRODUCTS/index.php)

11350 Technology Circle, Duluth, GA 30097 ph 770.814.4000 f 770.623.0698 info@wegener.com



WEGENER®